

2015 Beta 2 Setup Instructions (for Beta 1 users)

For customers who have installed 2015 Beta 1, and want to upgrade to 2015 Beta 2, please go through the following tasks to uninstall Beta 1 completely and then install Beta 2 properly:

- [Task 1: Export Appeon Developer and AEM configurations](#)
- [Task 2: Uninstall Beta 1](#)

Including

- [Task 2.1: Uninstall Appeon Developer and Appeon Server](#)
- [Task 3: Install Beta 2](#)
- [Task 4: Import Appeon Developer and AEM configurations](#)
- [Task 5: Full deploy the application](#)

Task 1: Export Appeon Developer and AEM configurations

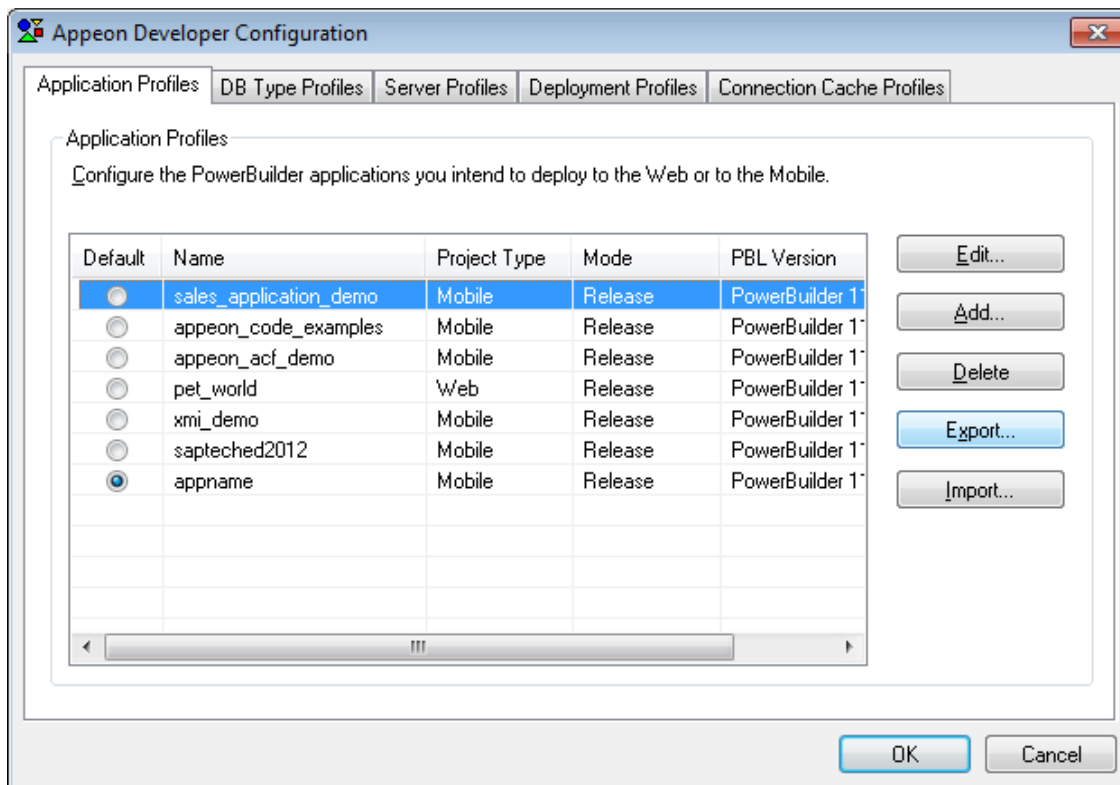
Before uninstalling Beta 1, you can export the configuration settings of Appeon Developer and AEM, so after installing Beta 2, you can reuse them by importing them to Beta 2.

To export the Appeon Developer configuration, take the following steps:

Step 1 – On the Appeon Developer toolbar, click the **Configure** icon ().

Step 2 – On the **Application Profiles** tab page, select an application profile by highlighting it, and then click **Export** to save the configuration of the selected profile to an XML file.

Repeat Step 2 if you want to export configuration for more than one application profile.



To export the AEM configuration, take the following steps:

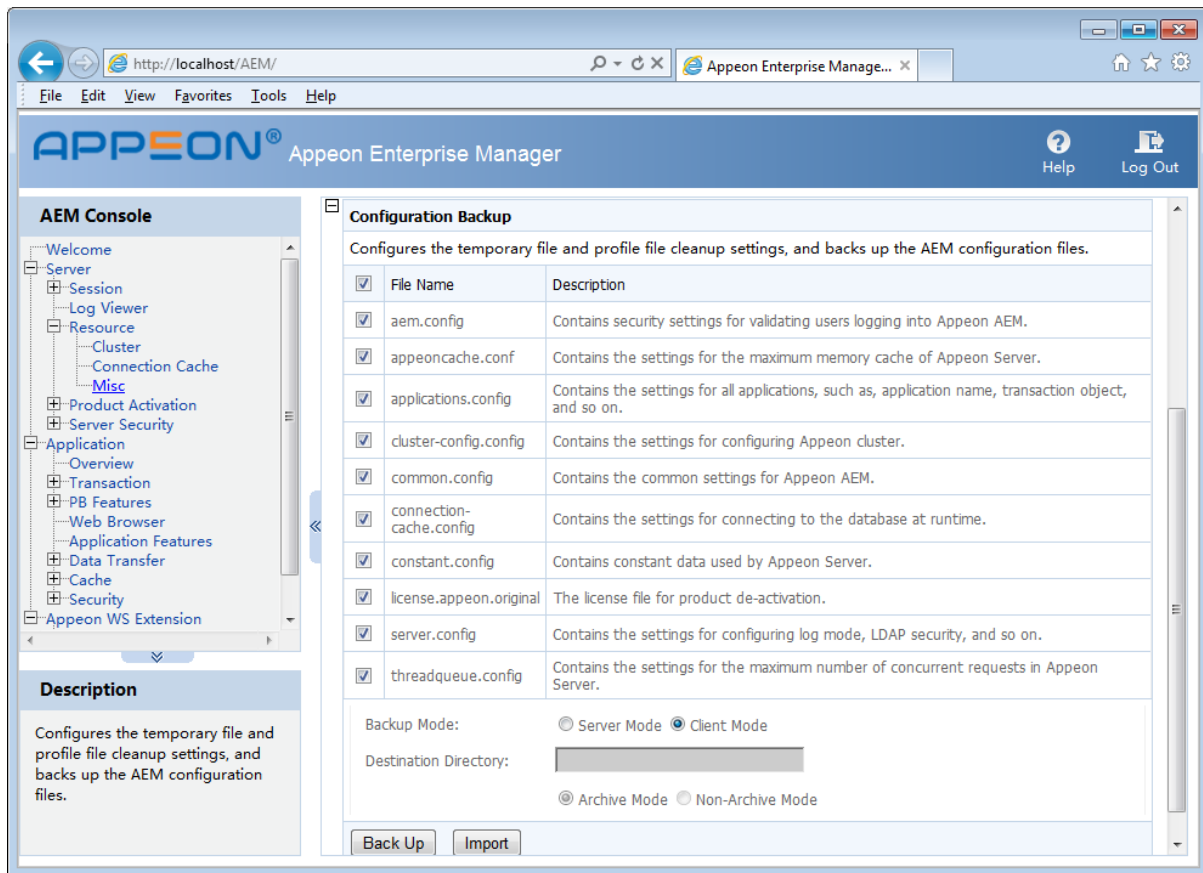
Step 1 – On the Apppeon Developer toolbar, click the AEM icon (🦋).

Step 2 – Log in to AEM by inputting the user name and password (by default, both are “admin”).

Step 3 – In the left navigation tree, expand **Resources** under **Server**, then click **Misc**.

Step 4 – In the right page, scroll down to the **Configuration Backup** area.

Step 5 – Select the configuration file(s), leave the **Client Mode** as default, then click **Backup** and save the XML file to the local directory.

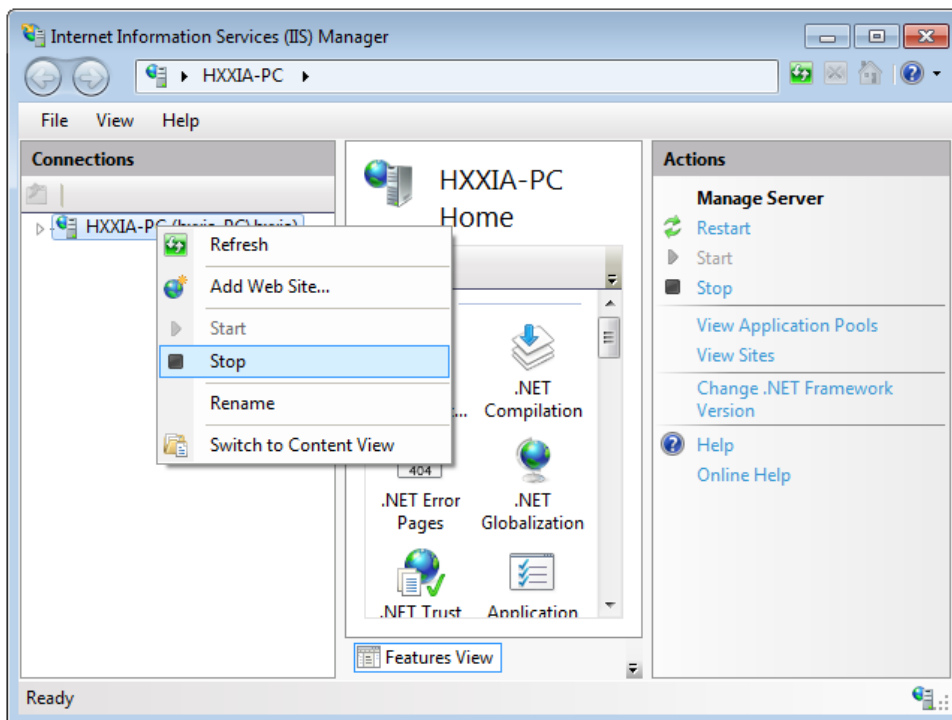


Task 2: Uninstall Beta 1

Task 2.1: Uninstall Apeon Developer and Apeon Server

You will need to uninstall Beta 1 thoroughly by following these steps:

Step 1 – Open IIS Manager, right click the **top** node (not the website node) in the treeview and select **Stop** from the popup menu. This will stop the entire IIS.



Step 2 – Uninstall Apeon Server and Apeon Developer.

Step 3 – Verify Apeon is cleanly uninstalled by the following two steps:

- Double check the **Control Panel\Programs\Programs and Features** and make sure no Apeon component is listed.
- Open a command prompt window and then type “regedit”<Enter>. Double check that no “ADT” or “ASN” keys are listed under HKEY_LOCAL_MACHINE\SOFTWARE\Apeon\<version_number>.

Step 4 – Clear the cache and temporary files in the Web browser such as IE etc.

Step 5 – Restart the machine.

Step 6 – Start IIS by right-clicking the **top** node in the treeview in the IIS Manager and selecting **Start** from the popup menu.

After that, you can proceed to install 2015 Beta 2 by following steps in “**Task 2: Install Apeon Server & Apeon Developer**” in “[Tutorial 1: Set up the Environment](#)”.

Task 3: Install Beta 2

To install the Beta 2 components: Apeon Developer and Apeon Server, follow instructions in “**Task 2: Install Apeon Server & Apeon Developer**” in “[Tutorial 1: Set up the Environment](#)”.

Task 4: Import Apeon Developer and AEM configurations

After you install Beta 2, import the Apeon Developer and AEM configuration settings so you can reuse them directly:


To import the Apeon Developer configuration, take the following steps:

Step 1 – On the Apeon Developer toolbar, click the **Configure** icon ().

Step 2 – On the **Application Profiles** tab page, click **Import** and then select the XML that stores the configuration settings of the application profile.

Repeat Step 2 if you want to import configuration settings for more than one application.

To import the AEM configuration, take the following steps:

Step 1 – On the AEM Developer toolbar, click the **AEM** icon ()

Step 2 – Log in to AEM by inputting the user name and password (by default, both are “admin”).

Step 3 – In the left navigation tree, expand **Resources** under **Server**, then click **Misc**.

Step 4 – In the right page, scroll down to the **Configuration Backup** area, and click **Import**.

Step 5 – Click **Browse** to select the XML file that stores the configuration settings of AEM, and then click **Import**.

Task 5: Full deploy the application

Now you will need to deploy the application in **Full Deployment Mode**:

Step 1 – Click the **Deploy** button () on the AEM Developer toolbar.

Step 2 – In the **AEM Deployment Wizard** page, do the following:

1. Select the application from the **Application to be deployed** dropdown list box.
2. Select **Local Deployment** from the **Deployment profile** dropdown list box.
3. Select **Full Application Deployment** from the **Deployment mode** dropdown list box.
4. Keep the rest as default.
5. Click **Next** to start the deployment process.

Step 3 – Click **Finish** when the deployment process is complete.

After that, please run and test the application by following instructions in “**Task 4: Run the Web application**” in the “[Tutorial 2: Config, Deploy & Run the Application](#)”.