

2015 Beta 2 Tutorials

2015 Beta 2

FOR WINDOWS & UNIX & LINUX

Contents

1 Tutorial 2: Config, Deploy & Run the Application	1
1.1 Task 1: Configure the database type	1
1.2 Task 2: Configure the database connection	2
1.3 Task 3: Configure and deploy the application	5
1.4 Task 4: Run the Web application	12
1.4.1 Verify browser settings	12
1.4.2 Run the Web application	12
1.4.2.1 Mozilla Firefox	12
1.4.2.2 Google Chrome	13
1.4.2.3 Opera	15
1.4.2.4 Internet Explorer	17

1 Tutorial 2: Config, Deploy & Run the Application

This tutorial will use the Apeon for .NET edition to walk you through configuring, deploying and running the Web application.

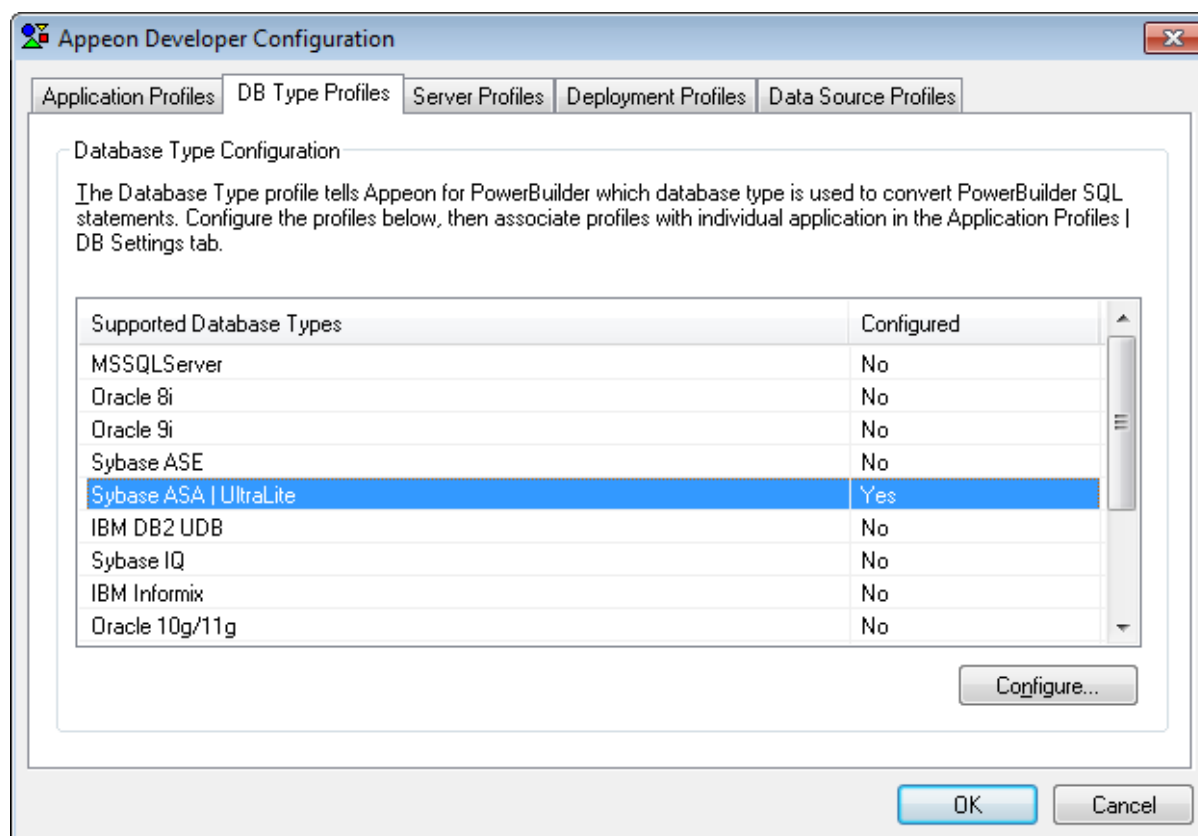
1.1 Task 1: Configure the database type

Step 1: On the Apeon Developer toolbar, click the **Configure** icon ()

Step 2: On the **Apeon Developer Configuration** window, click the **DB Type Profile** tab.

Step 3: View the **Configured** column of the database type used by your application, if it displays **Yes**, you can skip the remaining steps in this task. Otherwise, select the database type used by your application, and then click **Configure**.

Figure 1.1: DB Type Profile in ADT



Step 4: On the **Database Type Profile Configuration** window, do the following (take **Sybase ASA | UltraLite** as an example):

1. Select the **ODBC Interface** radio button from the **Database Interface** option.
2. Select a data source from the **Data Source** dropdown list box. It can be any data source (ODBC DSN) provided it is the same type as used by your application. It does NOT have to be the actual ODBC DSN used by your particular application. The database type is what is important and that a connection can be established to the specified ODBC DSN.

3. Keep the rest as default, and then click **Test Connection**.
4. Make sure that the database connection is successful.
5. Click **OK**.

Figure 1.2: Database Type Profile Configuration

Database Type Profile Configuration

For each database type used in your application(s), you must provide an ODBC or Native Interface connection to a database of that type in order for Apeon Developer to connect to the data source during deployment. You need only provide one connection to each type of database used in your application.

Database Settings

Database Type: Sybase ASA | UltraLite

Database Interface: ODBC Interface Native Interface

Syntax: Enclose table and column names in Quotes

Outer Join Syntax: ANSI

ODBC Interface

Data Source: ApeonSample

User ID:

Password:

ODBC Administrator...

Native Interface

Server:

User ID:

Password:

Database:

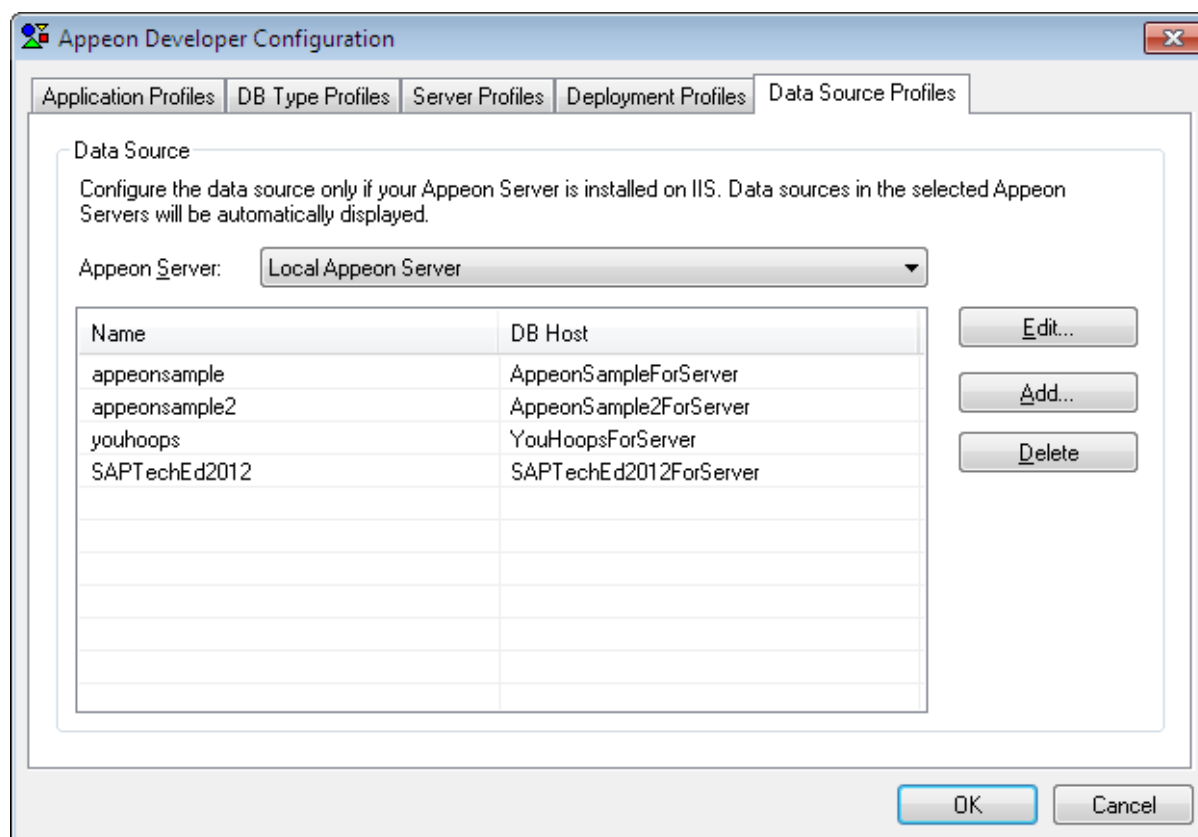
Release:

Test Connection OK Cancel

Now the **Configured** column of your database type will be indicated by **Yes**. You can select the database type when you create the application profile for your application in [Task 3: Configure and deploy the application](#).

1.2 Task 2: Configure the database connection

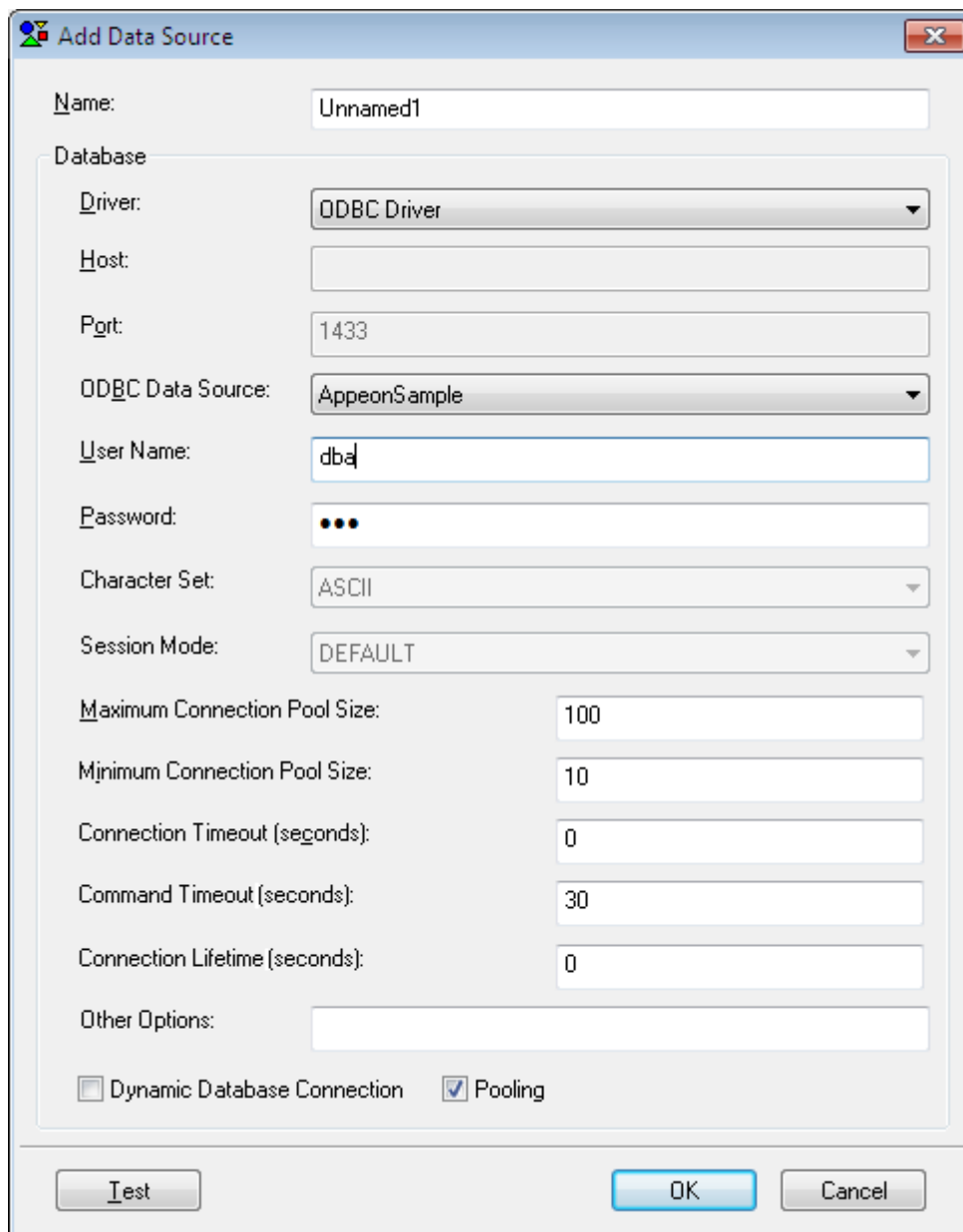
- Step 1: In the **Apeon Developer Configuration** window, click the **Data Source Profile** tab.
- Step 2: Select **Local Apeon Server** from the **Apeon Server** dropdown list box.
- Step 3: Click the **Add** button to create a data source in the selected Apeon Server.

Figure 1.3: Connection Cache Profiles

Step 4: On the **Add Data Source** window, specify the data source settings. Below we take **Sybase ASA/SQL Anywhere** and **Microsoft SQL Server** database as examples.

Steps for configuring a data source for **Sybase ASA/SQL Anywhere** database:

1. In the **Name** text box, input any text you like as the name of the data source.
2. Select **ODBC Driver** from the **Driver** dropdown listbox.
3. Select the data source from the **ODBC Data Source** dropdown listbox.
4. Input the database login user name and password respectively in the **User Name** text box and the **Password** text box.
5. Keep the rest as default, and then click **Test**. Make sure the test is successful.
6. Click **OK**.

Figure 1.4: Add Data Source

Steps for configuring a data source for **Microsoft SQL Server** database:

1. In the **Name** text box, input any text you like as the name of the data source.
2. Select **MS SQL Server Native Driver** from the **Driver** dropdown listbox.
3. Input the IP address or machine name of the database server in the **Host** field.
4. Input the port number of the database server in the **Port** field.
5. Input the database name, database login user name and password respectively in the **Database Name**, the **User Name** and the **Password** text boxes.
6. Keep the rest as default, and then click **Test**. Make sure the test is successful.
7. Click **OK**.

Tip: you should check with your SQL Server administrator to verify the port number, the user name, and the password are correct.

Figure 1.5: MS SQL Server Native Driver

Add Data Source

Name: northwind

Database

Driver: MS SQL Server Native Driver

Host: 192.0.0.205

Port: 1433

Database Name: northwind

User Name: sa

Password: |

Character Set: ASCII

Session Mode: DEFAULT

Maximum Connection Pool Size: 100

Minimum Connection Pool Size: 10

Connection Timeout (seconds): 0

Command Timeout (seconds): 30

Connection Lifetime (seconds): 0


Other Options:

Dynamic Database Connection Pooling

Test OK Cancel

Now the data source you added will be listed in the **Data Source Profiles** tab. You can select it when you create the application profile for your application in [Task 3: Configure and deploy the application](#).

1.3 Task 3: Configure and deploy the application

Step 1: On the Apeon Developer toolbar click the first icon **Config Wizard** ()

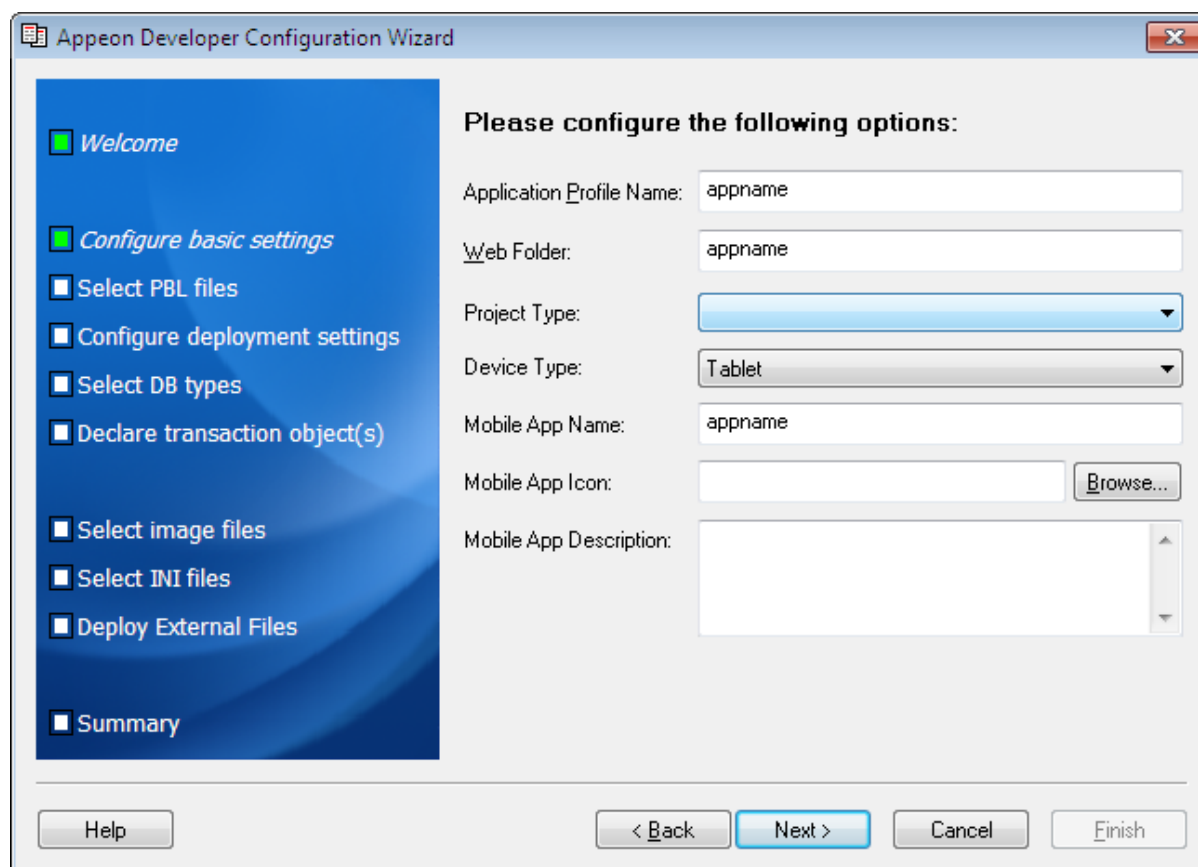
Step 2: In the welcome screen click **Next**.

Step 3: Specify following settings and then click **Next**.

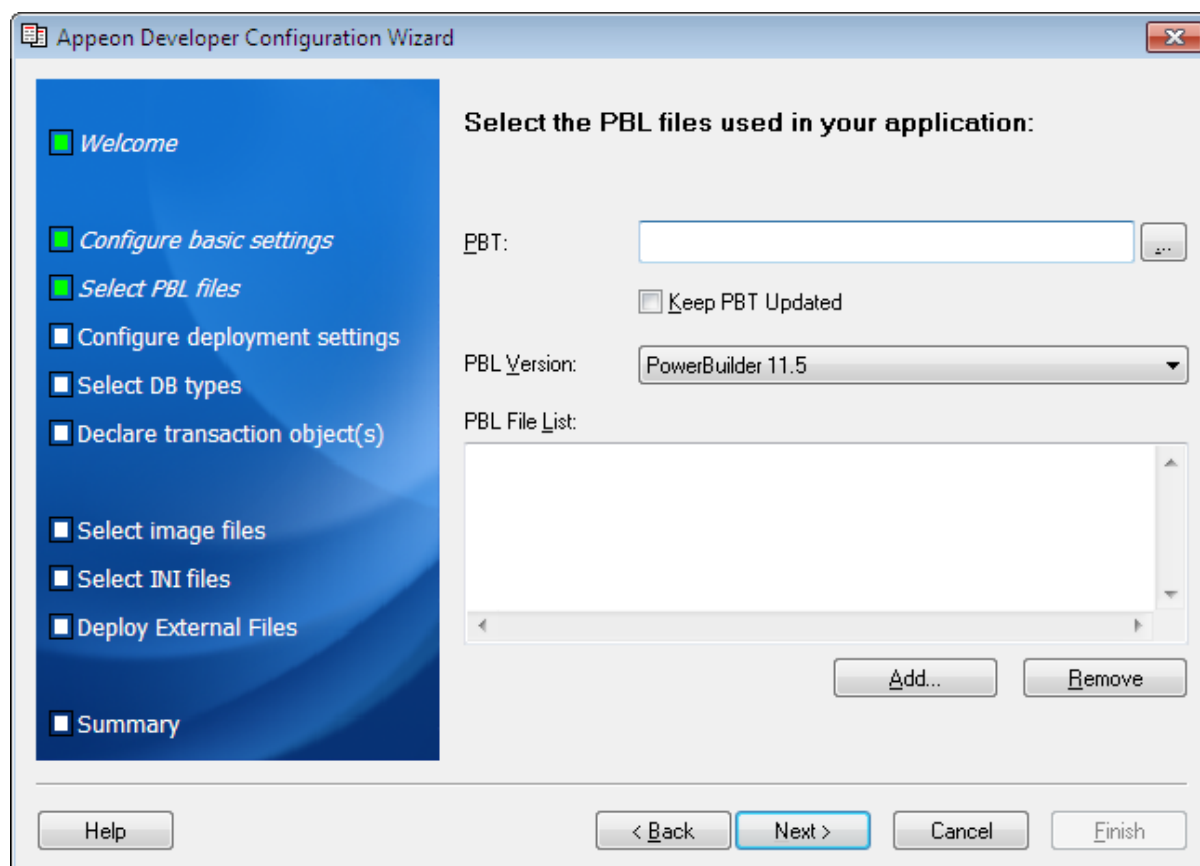
1. Specify the application profile name in the **Application Profile Name** text box. The same text will be displayed in the **Web Folder** text box. You can modify it to use different text.

2. Select **Web** from the **Project Type** dropdown list box. You can also select **Universal** as **Project Type**, in which case the app will be deployed as a Web app and a Mobile app.

Figure 1.6: Apeon Developer Configuration Wizard



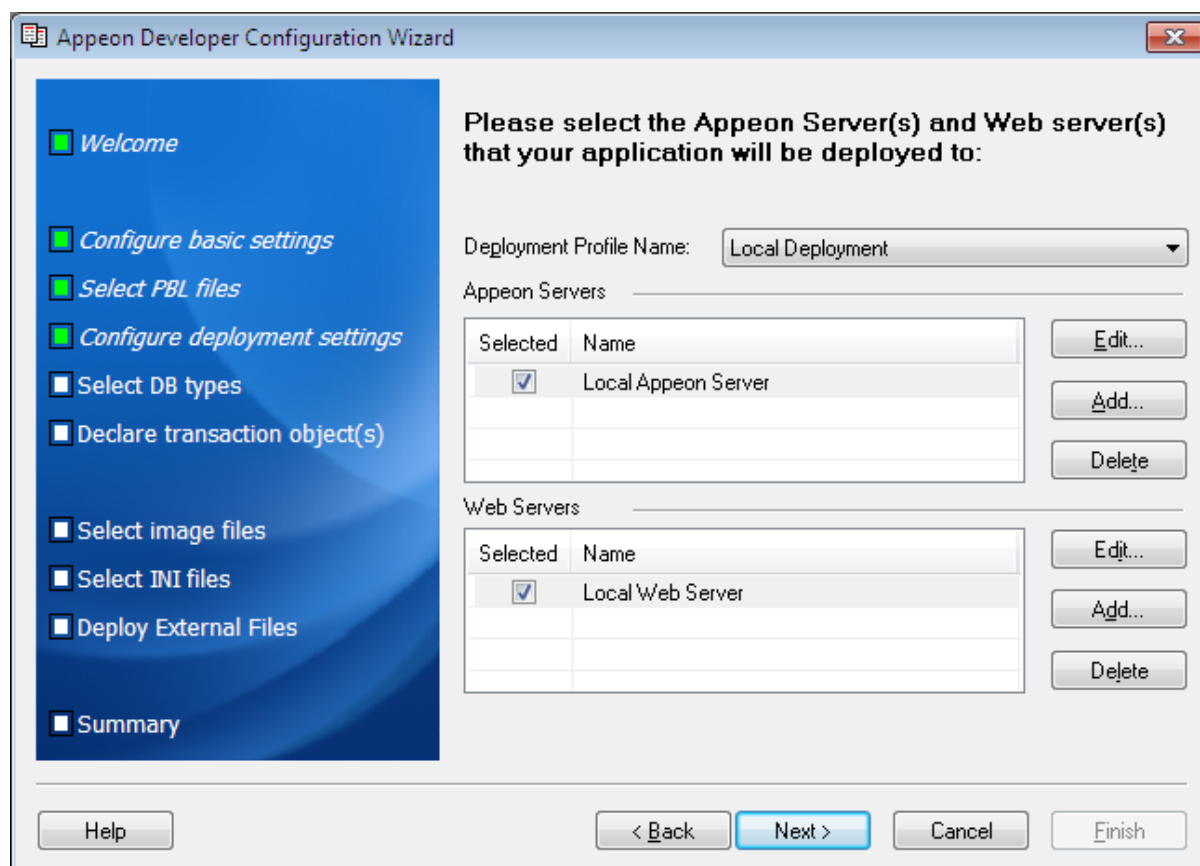
Step 4: Add the PBT from the **PBT** dropdown list box (and all related PBLs will be automatically added for you) or add the PBL files individually that are used in your application by clicking the **Add File** button in the **PBL File List** group box, and then select a PBL version from the **PBL Version** dropdown list box. Click **Next**.

Figure 1.7: Add the PBT in ADT Wizard

Step 5: Keep the default settings and click **Next**.

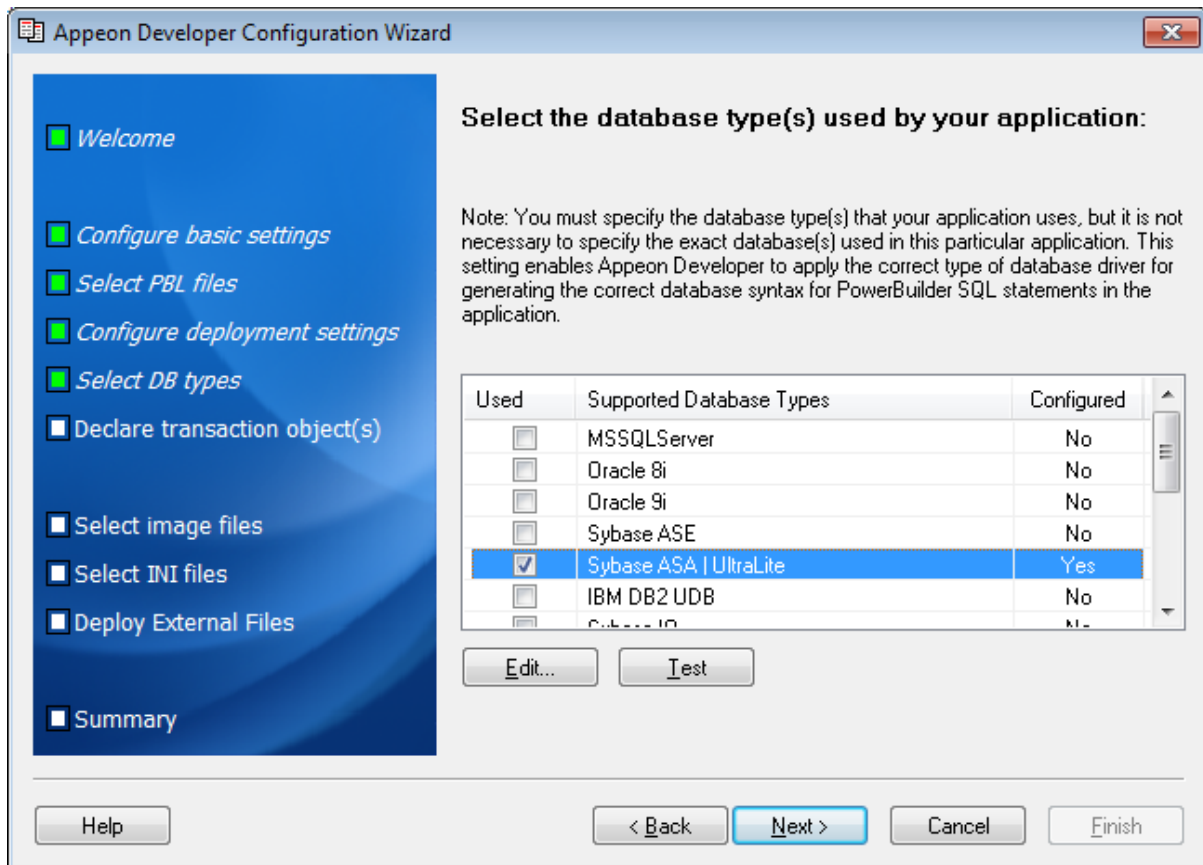
Since you have installed Appeon Developer and Appeon Server on the same machine, you can directly use the **Local Appeon Server** profile, the **Local Web Server** profile, and the **Local Deployment** profile, all of which are configured automatically by the product setup program.

When you click **Next** the config wizard will automatically test the connection to the server. You will not be able to proceed if the connection test failed.

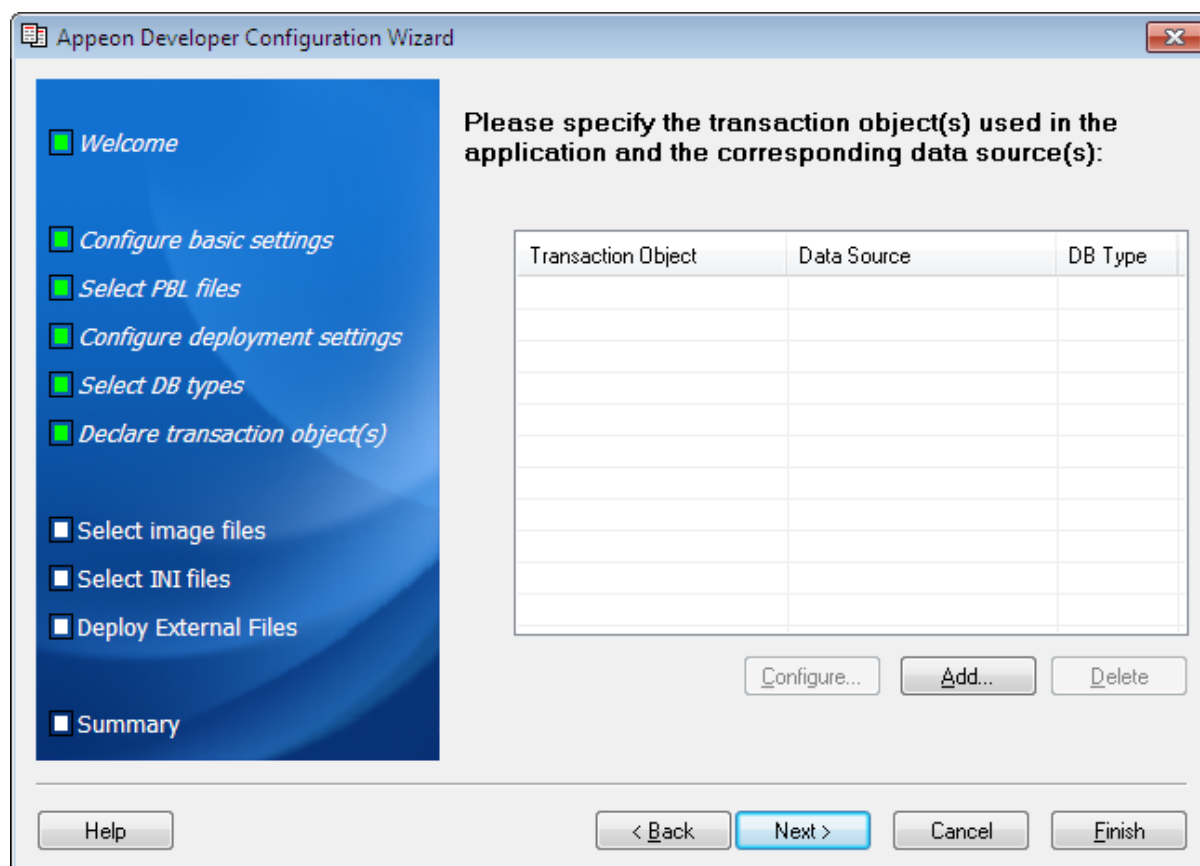
Figure 1.8: Select the Apeon Server(s) and Web Server(s)

Step 6: Select the database type used by your application and click **Next**.

If the required database type has not been configured in [Task 1: Configure the database type](#), you should highlight the database type, then click **Edit**, and then follow Step 4 in [Task 1: Configure the database type](#) to configure it.

Figure 1.9: Select the database type(s)

Step 7: Click **Add** to specify the transaction object(s) used in your application.

Figure 1.10: Specify the transaction object

In the **Add Transaction Object** window, specify the following settings:

- Input the transaction object name used by the application to the **Transaction Object** text box. Default transaction object for most PB applications is **SQLCA**.
- Select the database type from the **Database Type** list box.
- Select **Local Appeon Server** from the **Appeon Server** dropdown list box.
- Select the data source from the table. The data source should connect to the same database that the PowerBuilder application connects to. If the required data source has not been configured in [Task 2: Configure the database connection](#), you should click **Add**, and then follow Step 4 in [Task 2: Configure the database connection](#) to create it.

Figure 1.11: Select the connection cache

Add Transaction Object

Transaction Object:

Database Type:

Data Source:

If your Apeon Server is the .NET edition, you can also select, edit, add, or delete the data source in the below Data Source group box.

Data Source

Apeon Server:

Selected	Name	DB Host

Tip: If you have more than one transaction object you can add additional transaction objects by repeating the above steps.

Step 8: Click **Browse** to select the image file or the folder that contains the image files, if any. Click **Next**.

Step 9: Click **Add File** or **Add Directory** to select the INI file, if any. Click **Next**.

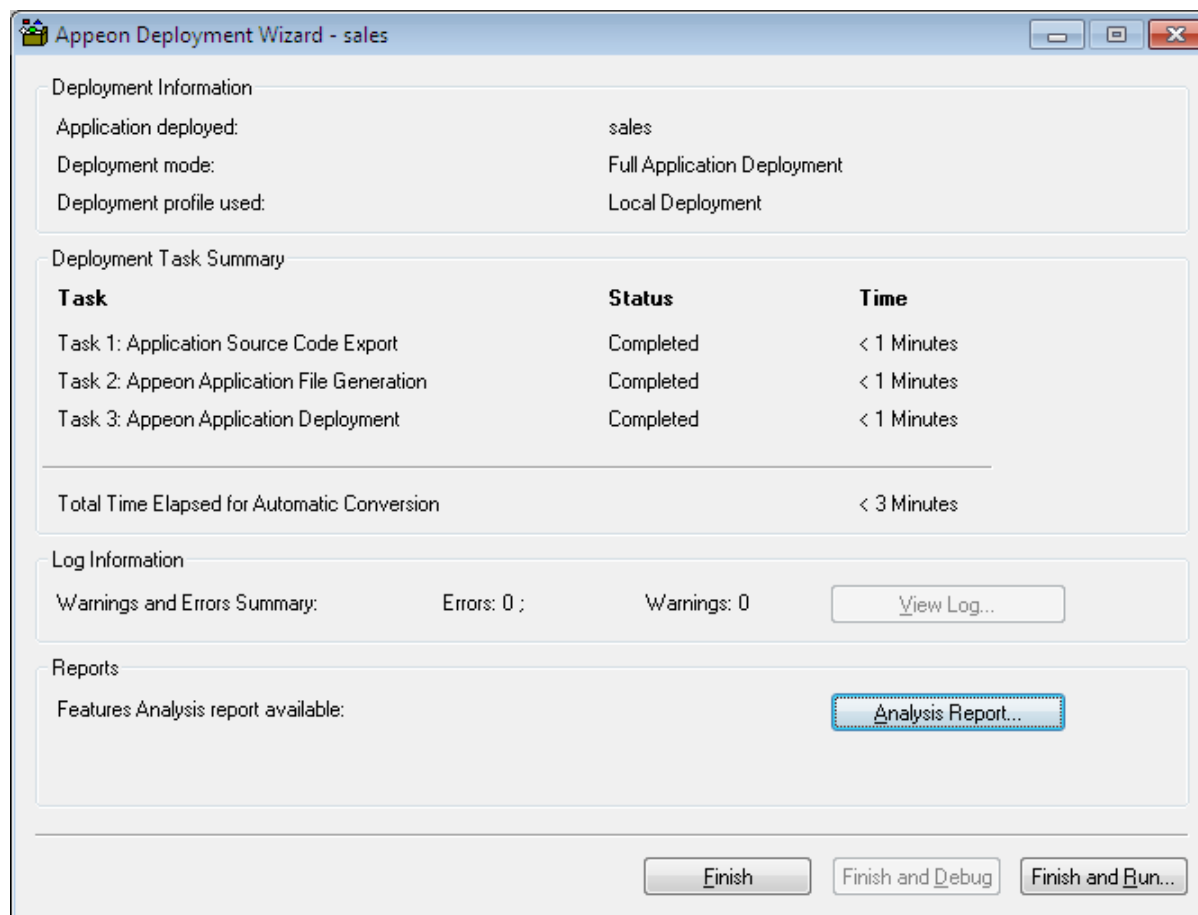
Step 10: Click **Add File** or **Add Directory** to select any other external files such as TXT file etc., if any. Click **Next**.

Step 11: In the configuration summary screen, keep the **Deploy the application now** option as selected. Click **Finish**.

Once you click **Finish**, the **Apeon Deployment Wizard** automatically starts deploying the application. To manually start **Apeon Deployment Wizard**, you can click the **Deploy** icon

() on the Apeon Developer toolbar.

Step 12: Click **Finish** when the deployment process is complete.

Figure 1.12: Appeon Deployment Wizard_sales

1.4 Task 4: Run the Web application

1.4.1 Verify browser settings

You should be able to directly run the Appeon Web application in Chrome/Firefox/Opera without any problems, by using the default settings of these browsers, however, if you encounter runtime problems, or if you have changed the default settings before, you are recommended to double check that the following two settings are enabled in the browser:

- Enable JavaScript
- Enable plug-in

1.4.2 Run the Web application

Depending on which Web browser you have installed, you can follow instructions in the following appropriate section to install the Appeon plug-in and run the Web application. If the Appeon plug-in has already been installed by the other Web browser, then you can directly run the Web application without needing to install the plug-in any more.

1.4.2.1 Mozilla Firefox

Step 1: Open Mozilla Firefox, input the application URL in the address bar, and start the application.

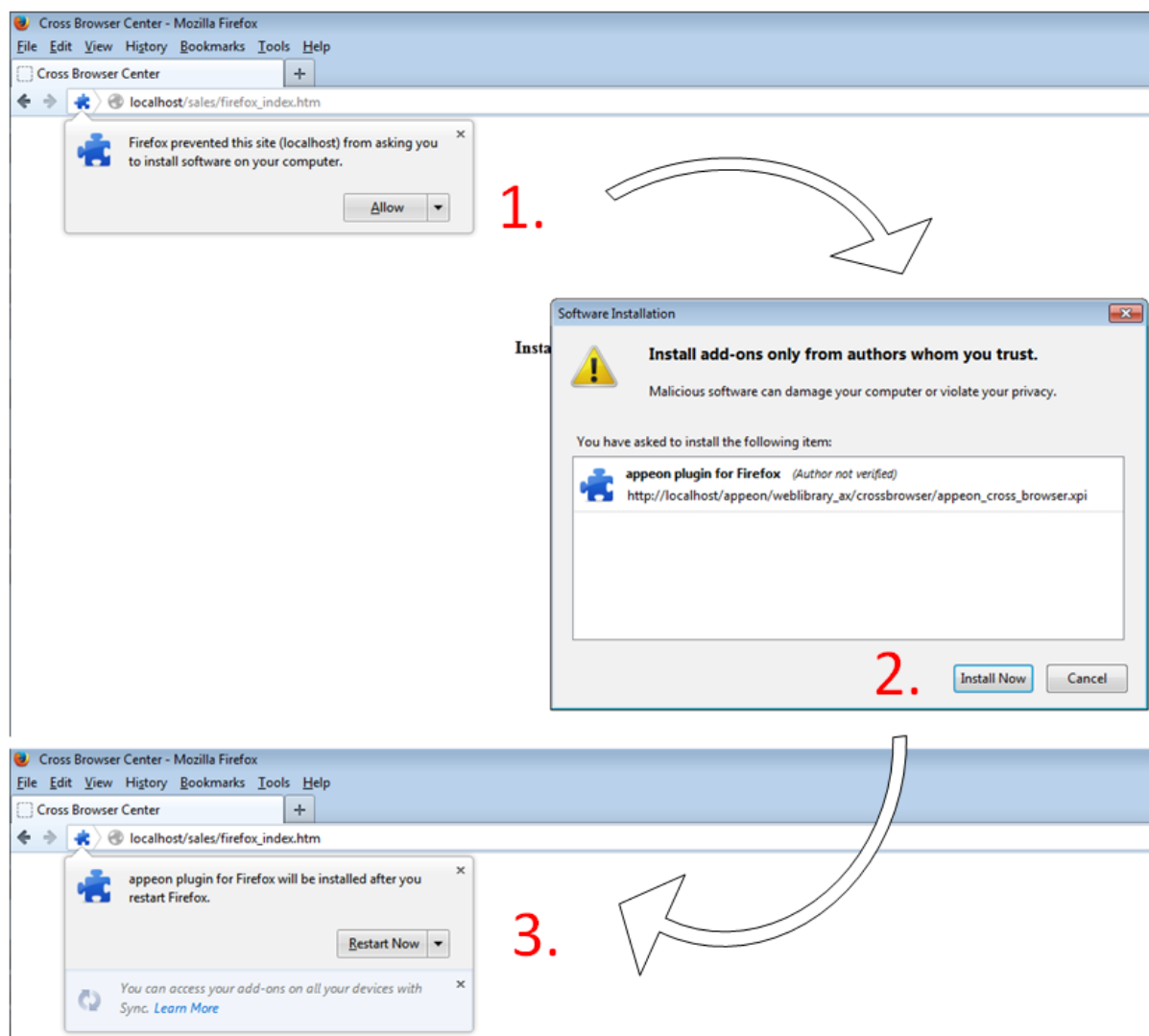
The application URL must look like `http://192.168.1.117/myApplication/` or `http://192.168.1.117/myApplication/firefox_index.htm`.

Note: The application URL is specified in the **Web Folder** field in Step 1 of [Task 3: Configure and deploy the application](#).

Step 2: Click **Allow** to download the Appeon plug-in from the web site to the computer, and then click **Install Now** to install the plug-in.

Step 3: Click **Restart Now** to automatically restart Firefox when the plug-in is installed.

Figure 1.13: Install plug-in for Firefox



1.4.2.2 Google Chrome

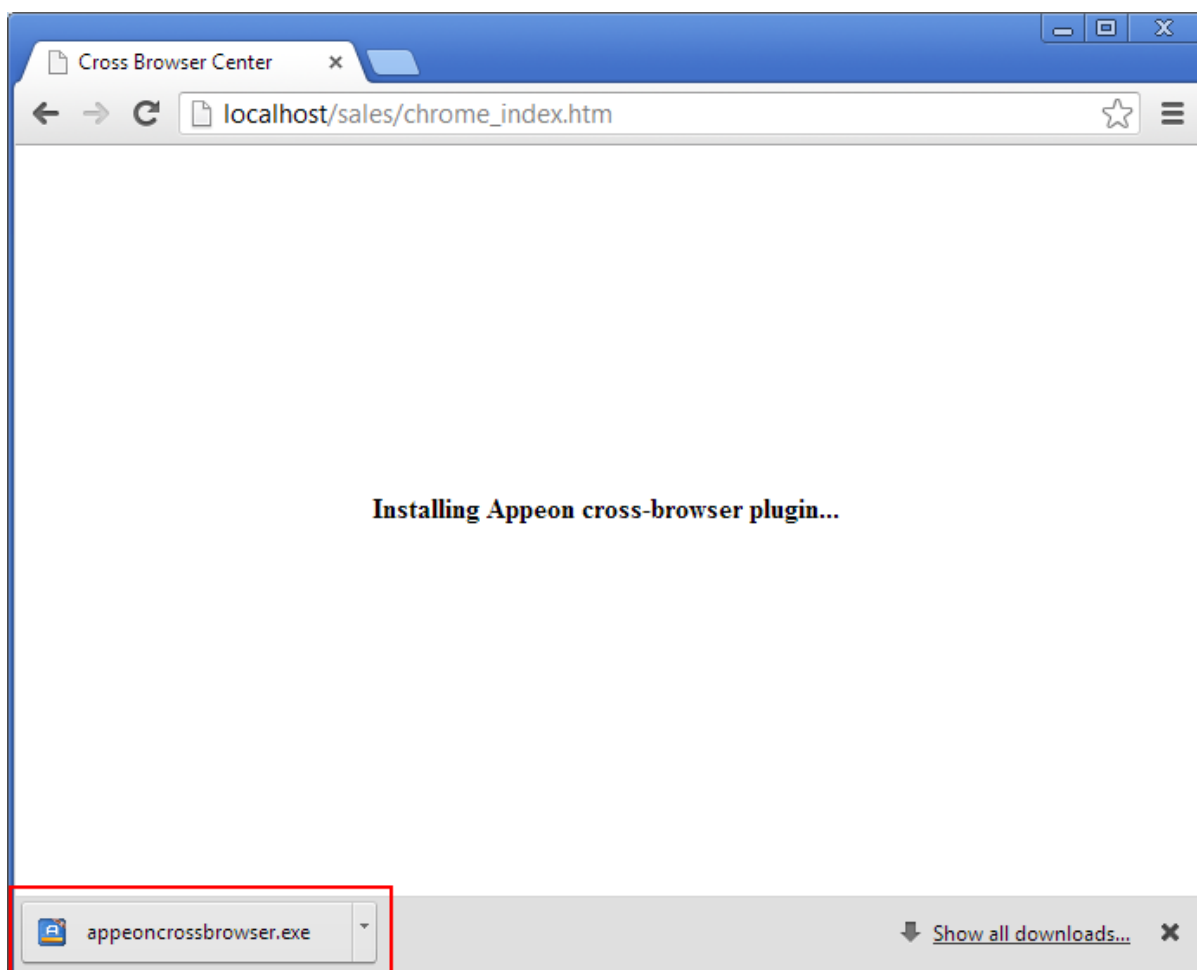
Step 1: Open Google Chrome, input the application URL in the address bar, and start the application.

The application URL must look like `http://192.168.1.117/myApplication/` or `http://192.168.1.117/myApplication/chrome_index.htm`.

Note: The application URL is specified in the **Web Folder** field in Step 1 of [Task 3: Configure and deploy the application](#).

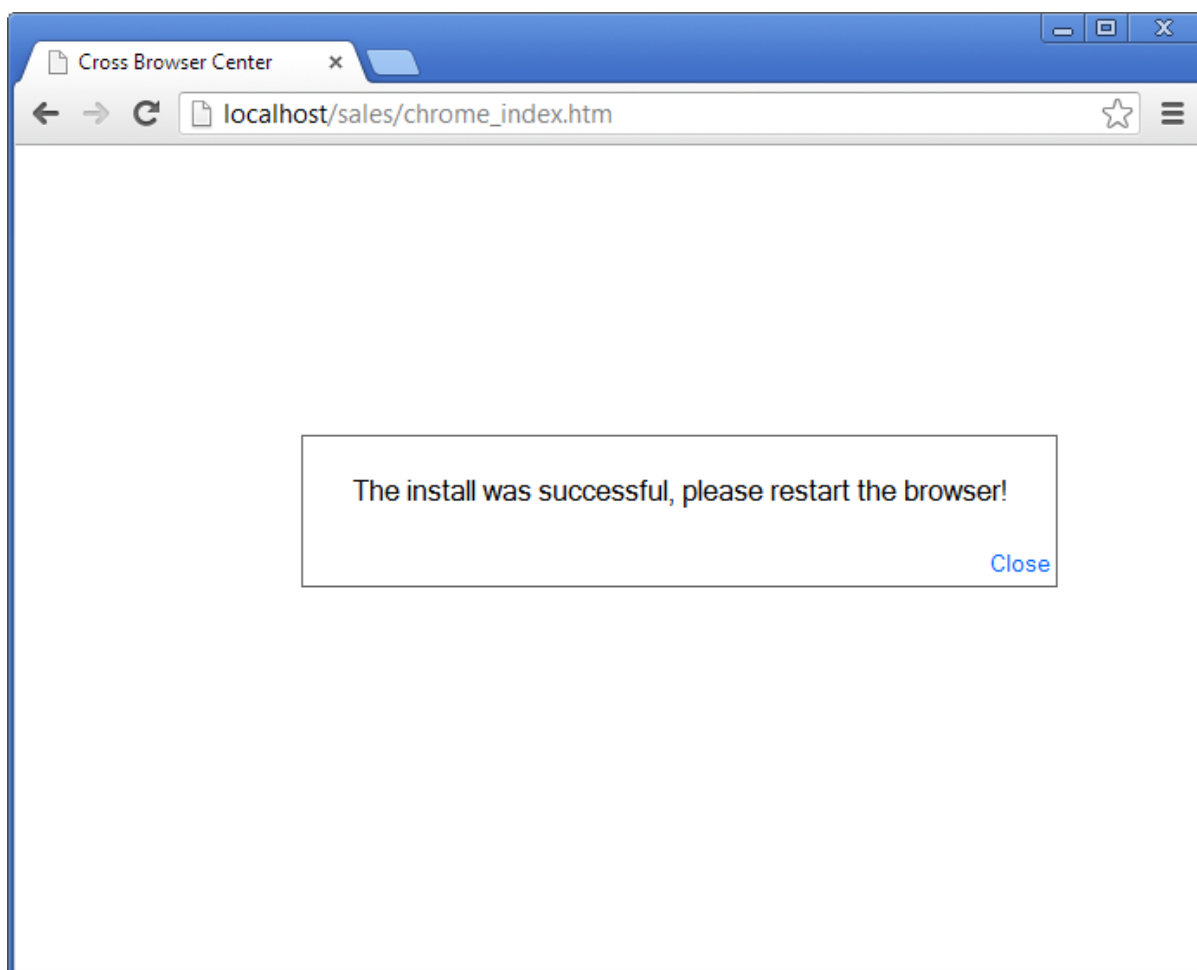
Step 2: Click to install the Appeon cross-browser plug-in on the lower left of the browser window.

Figure 1.14: Install plug-in for Chrome



Step 3: After the plug-in is installed, manually restart Chrome and run the application again.

If you log into Windows as a normal user, Chrome would prompt you to run the Appeon cross-browser plug-in with two options: "only this time" or "always run for this site". It is highly recommended that you select the "always run for this site" option, because the application will fail to run in Chrome if you select "only this time".

Figure 1.15: Install plug-in for Chrome

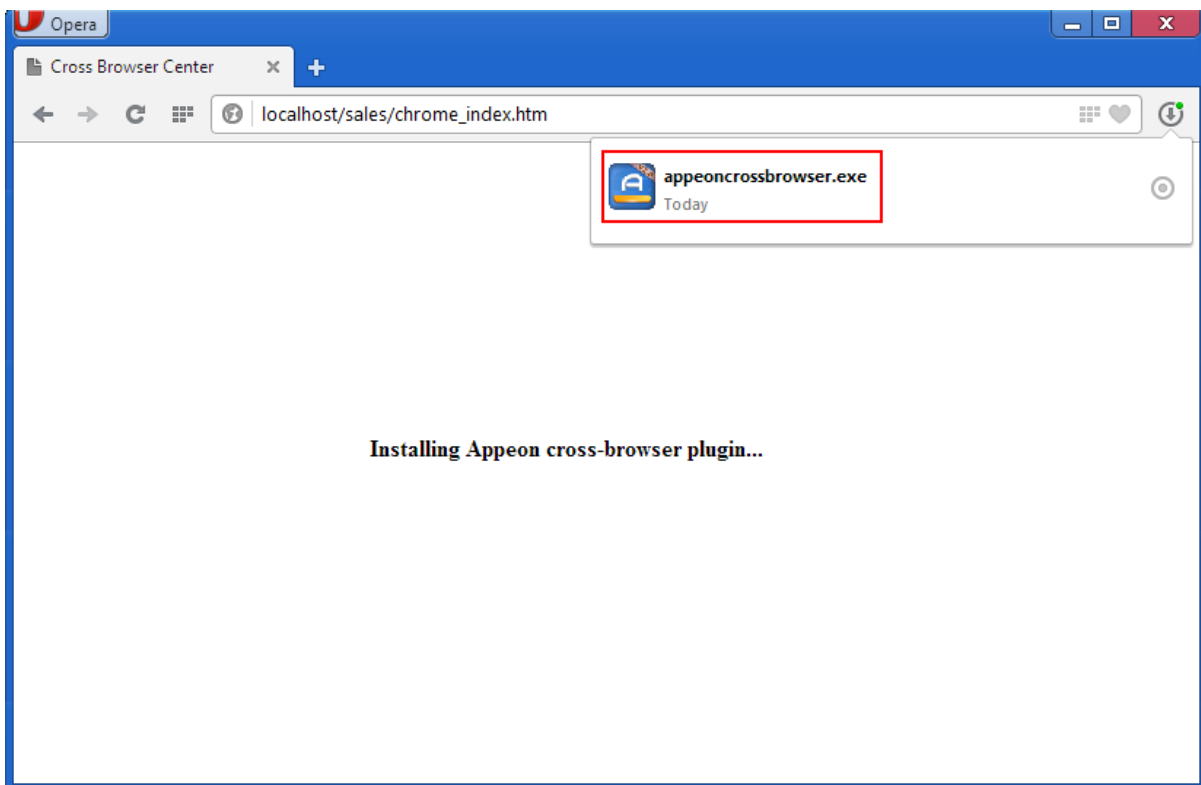
1.4.2.3 Opera

Step 1: Open Opera, input the application URL in the address bar, and start the application.

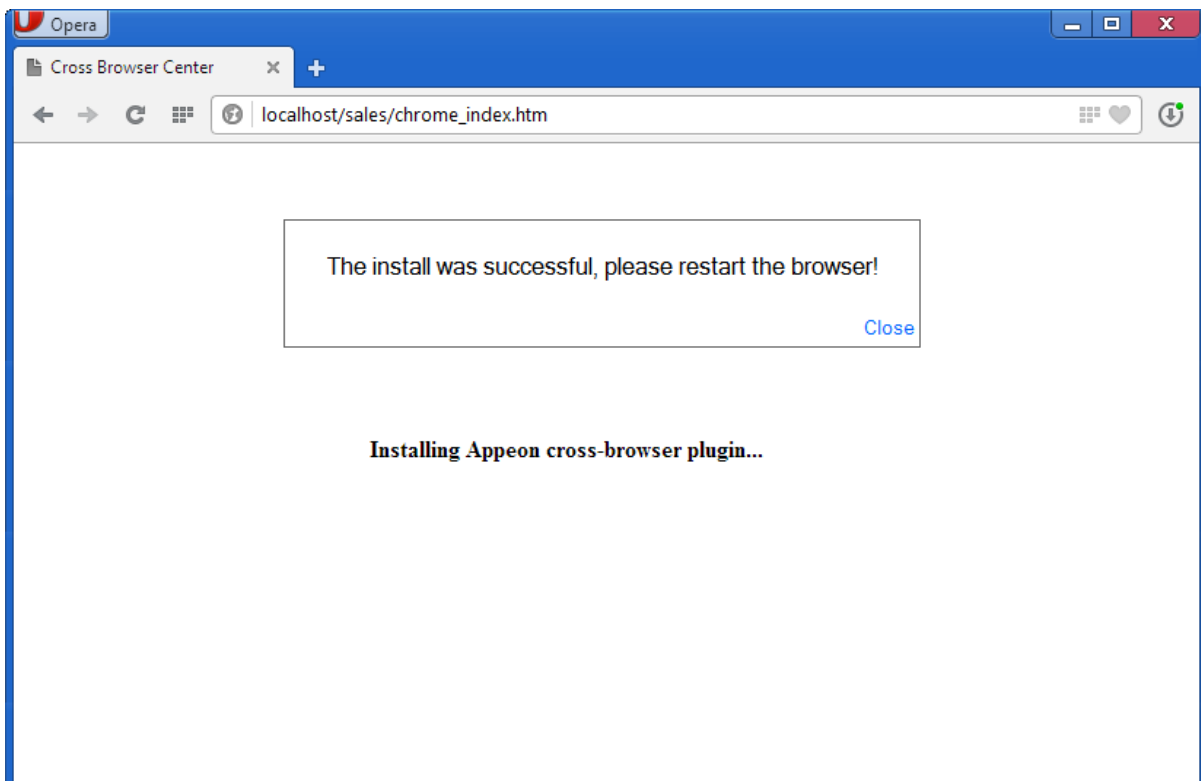
The application URL must look like <http://192.168.1.117/myApplication/>.

Note: The application URL is specified in the **Web Folder** field in Step 1 of [Task 3: Configure and deploy the application](#).

Step 2: Double click to install the Appeon cross-browser plug-in on the top right of the browser window.

Figure 1.16: Install plug-in for Opera

Step 3: After the plug-in is installed, manually restart Opera and run the application again.

Figure 1.17: Install plug-in for Opera

1.4.2.4 Internet Explorer

Step 1: Open Internet Explorer and navigate to the trusted sites list (**Internet Option > Security > Trusted Sites > Sites**). Uncheck the **HTTPS** checkbox and add the IP address of your IIS as well as the localhost. For example, if your IP address is 192.168.1.117 then it should look as follows:

Figure 1.18: Add the IP address of IIS

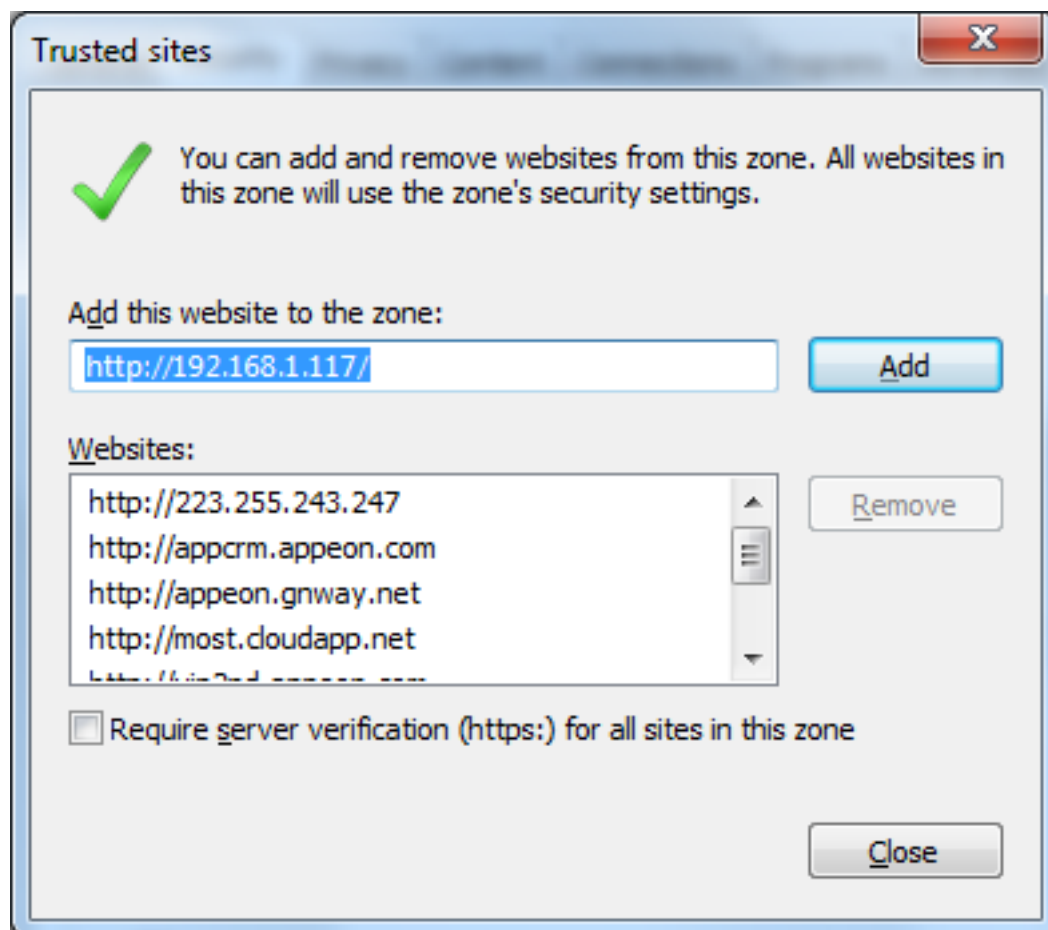
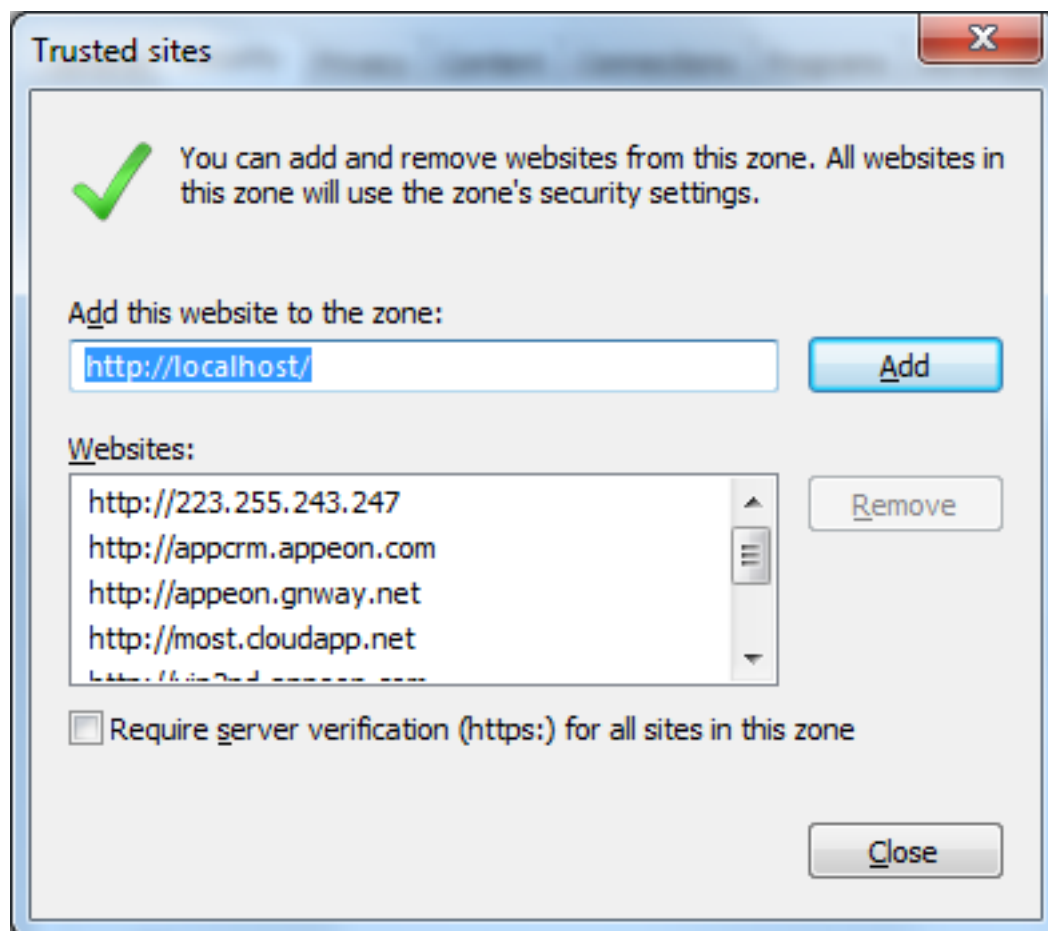


Figure 1.19: Add the IP address of localhost

Step 2: Input the application URL in the Internet Explorer address bar and start the application. The application URL must look like this `http://192.168.1.117/myApplication/`.

Note: The application URL is specified in the **Web Folder** field in Step 1 of [Task 3: Configure and deploy the application](#).

Step 3: Install the Web browser plug-in, when you are prompted. You will be prompted twice, please accept both times.

Step 4: When the application is loaded successfully in Internet Explorer, test it carefully.