

2015 Beta 2 Tutorials

2015 Beta 2

FOR WINDOWS & UNIX & LINUX

Contents

1 Tutorial 1: Set up the Environment	1
1.1 Task 1: Prepare the machine	1
1.1.1 Task 1.1: Disable UAC (User Account Control)	1
1.1.2 Task 1.2: Uninstall previous version of 64-bit Appeon	2
1.1.3 Task 1.3: Install IIS	4
1.1.4 Task 1.4: Configure IIS	6
1.2 Task 2: Install Appeon Server and Appeon Developer	8
1.2.1 Task 2.1: Install Appeon Server and Appeon Developer	8
1.2.2 Task 2.2: Verify the installation	9

1 Tutorial 1: Set up the Environment

You will need to go through the following tasks to set up the **2015 Beta 2** environment for deploying and running the Web application:

1.1 Task 1: Prepare the machine

The simplest scenario will be used in this guide, which requires 1 Windows PC.

- **1 Windows PC:** used as the development machine, the Appeon Server, and the client

The 32-bit version of **Appeon for .NET** edition will be used to walk you through this guide, so please prepare the environment according to the following requirements.

Software requirements for **Windows PC**:

- Windows 7 or 8.1 (32-bit or 64-bit)

Appeon 32-bit version can be installed to the 64-bit OS without any special considerations. But if you have installed **Appeon for PowerBuilder 64-bit** version before please uninstall it first. See [Task 1.2: Uninstall previous version of 64-bit Appeon](#).

- Internet Explorer 9, 10, or 11, Mozilla Firefox 29 or 30, Google Chrome 35, or Opera 21
- PowerBuilder 9.x, 10.x, 11.x, or 12.x
- (Optional) Sybase SQL Anywhere (32-bit engine) 8.0.2, 9.0, 10.0.1, 11.0, or 12.0 (for running the demos included with the Appeon installation)
- .NET Framework 4.x

For Windows 7, you will need to first download the .NET Framework 4.0 setup program from <http://www.microsoft.com/en-us/download/details.aspx?id=17718>.

- IIS 7.5 or 8.x

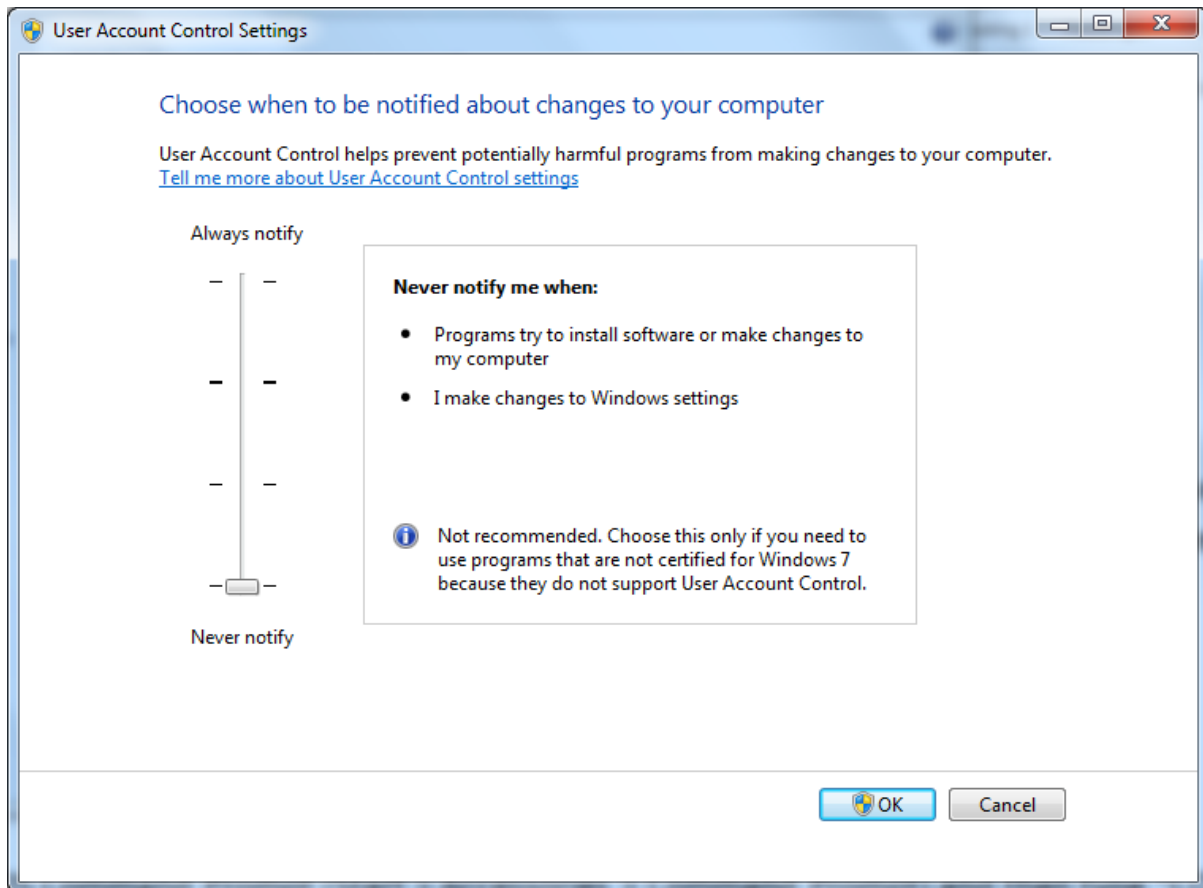
See [Task 1.3: Install IIS](#) and [Task 1.4: Configure IIS](#).

- Appeon for PowerBuilder 2015 **Beta 2**

Install Appeon Server and Appeon Developer. See [Task 2: Install Appeon Server & Appeon Developer](#).

1.1.1 Task 1.1: Disable UAC (User Account Control)

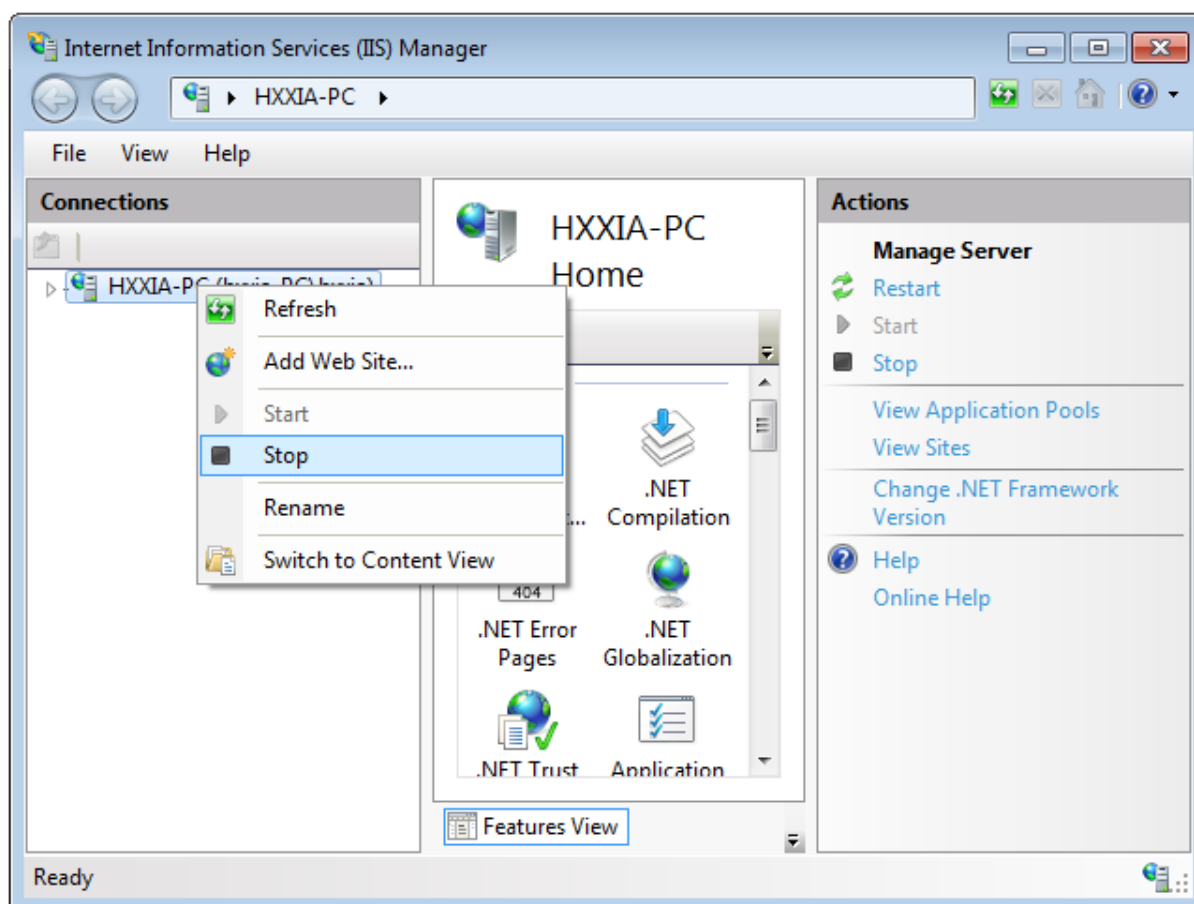
On the Windows PC, go to the **Control Panel > User Accounts** and disable UAC by setting the slider to "**Never notify**" (see screenshot below). After you have disabled UAC you **MUST** restart the computer. If you do not restart the computer the change will NOT take effect.

Figure 1.1: Disable UAC

1.1.2 Task 1.2: Uninstall previous version of 64-bit Appeon

If you are using a 64-bit machine you can install **Appeon (32-bit)** to the 64-bit OS without any special configurations. But if you have a previous version of **Appeon for PowerBuilder (64-bit)** already installed on this machine then you must uninstall it first.

Step 1: Open **IIS Manager**, right click the **top** node (not the website node) in the treeview and select **Stop** from the popup menu. This will stop the entire IIS.

Figure 1.2: Stop the entire IIS Manager

Step 2: Close any opened windows, especially **Sybase PowerBuilder** and **IIS Manager**.

Step 3: Uninstall all of the Appeon components including **Appeon Server**, **Appeon Developer**, and **Appeon Help**. You will need to uninstall these components one by one.

Step 4: Verify Appeon is cleanly uninstalled by the following two steps:

- Double check the **Control Panel\Programs\Programs and Features** and make sure no Appeon component is listed.
- Open a command prompt window and then type **regedit<Enter>**. Double check that no **ADT** or **ASN** keys are listed under **HKEY_LOCAL_MACHINE\SOFTWARE\Appeon \<version_number>**.

Step 5: Clear the Internet Explorer cache and temporary files.

Step 6: Delete the entire "appeon" folder from **C:\Users\User_Name\AppData\Roaming**.

Step 7: Delete all the Appeon application folders from the IIS Web root. For example, under **C:\inetpub\wwwroot** at minimum you should delete the following folders: **appeon**, **appeon_acf_demo**, **appeon_code_examples**, **pet_world**, **sales_application_demo**.

Step 8: Restart the machine.

Step 9: Start IIS by right-clicking the **top** node in the treeview in the IIS Manager and selecting **Start** from the popup menu.

After that, you can proceed to install Apeon for PowerBuilder 2015 **Beta 2** by following steps in [Task 2: Install Apeon Server & Apeon Developer](#).

1.1.3 Task 1.3: Install IIS

IIS is not installed on Windows 7 or 8.1 by default. You need to manually install it.

Before you install IIS make sure you have installed .NET Framework 4.x. To install .NET Framework 4.x for Windows 8.1, please go to the **Turn Windows features on or off** and check the box for .NET 4.5; for Windows 7, please download the setup program from <http://www.microsoft.com/en-us/download/details.aspx?id=17718> and install .NET Framework 4.0.

Below are steps for installing IIS. If you already have IIS installed, please carefully verify the correct IIS options are checked (see screenshots below). By default, not all the required components will be installed.

Step 1: Click **Start** and then click **Control Panel**. In Control Panel, click **Programs** and then click **Turn on or off Windows features**.

Step 2: Select the check box of **Internet Information Services**, then expand the list and select the items under **Web Management Tools**, **Application Development Features** and **Common HTTP Features** according to the figure below. Click **OK** to let Windows finish the install.

Figure 1.3: Select the Web Management Tools

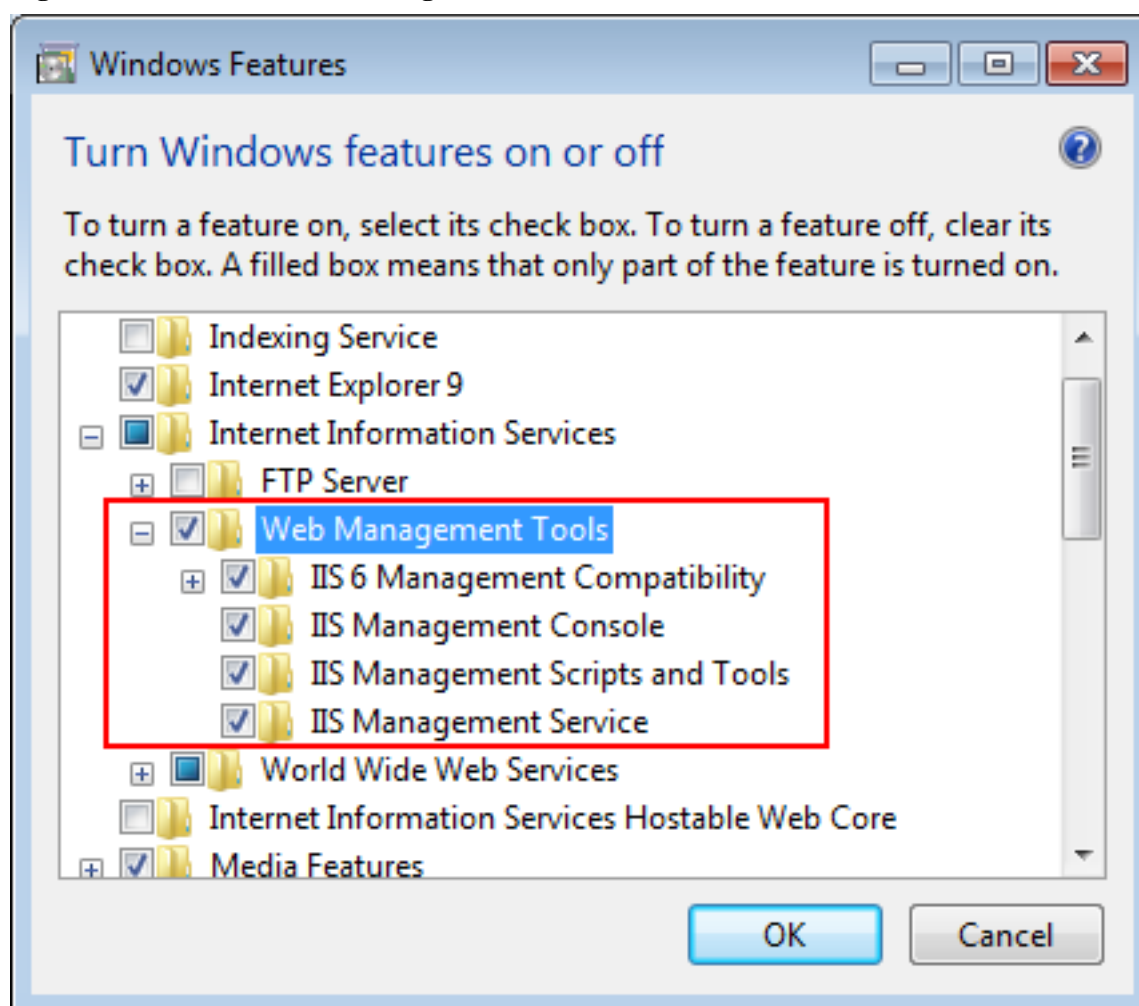


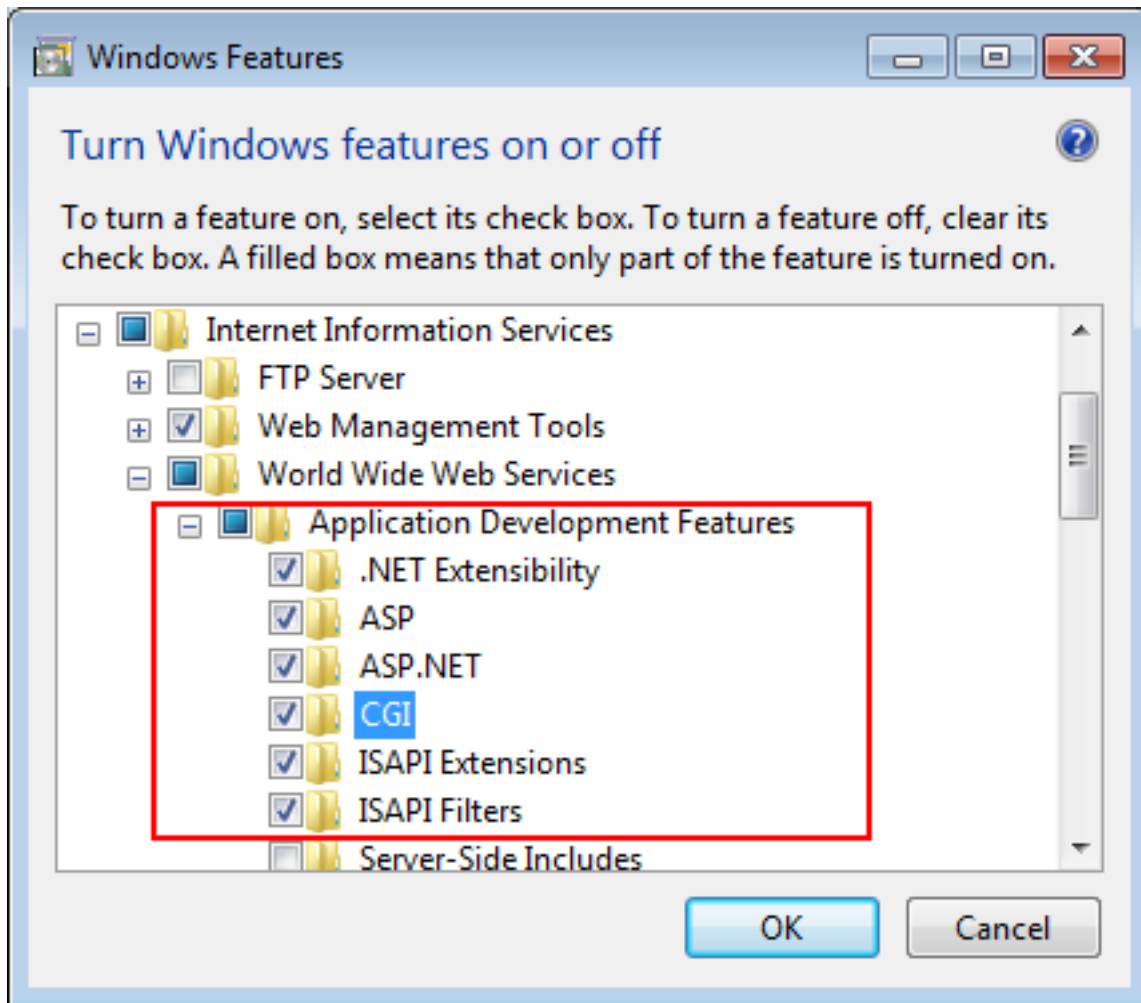
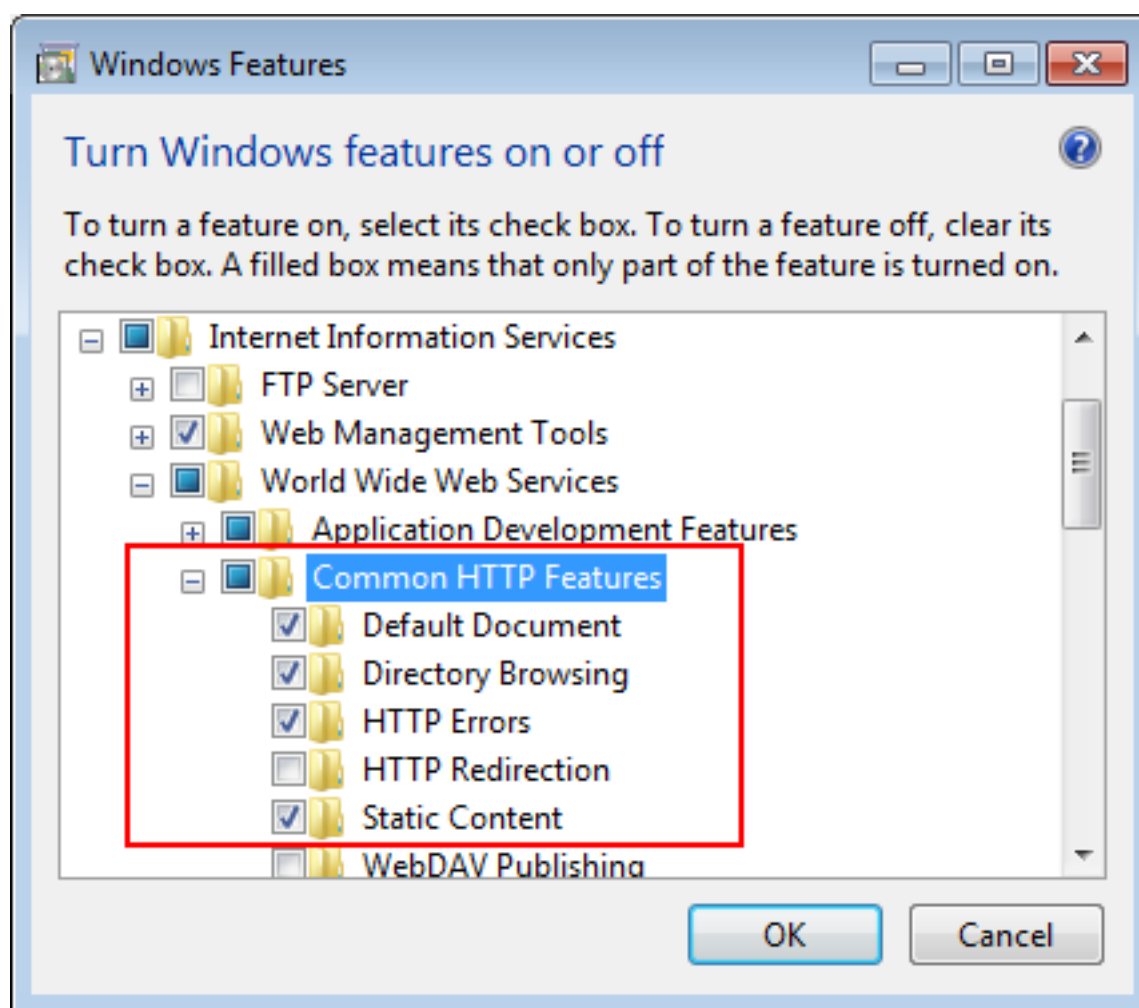
Figure 1.4: Select the Application Development Features

Figure 1.5: Select the Common HTTP Features

Step 3: After IIS is installed, go to **IIS Manager**, right click the **Default Web Site**, select **Binding**, and make sure **IP Address** is indicated with an asterisk "*". If not, please click **Edit** and select **All Unassigned** for the IP address, this will display **IP Address** as an asterisk "*".

Step 4: Run `http://IP_Address:80/` in the Web browser. If the IIS welcome screen displays, then IIS is working properly.

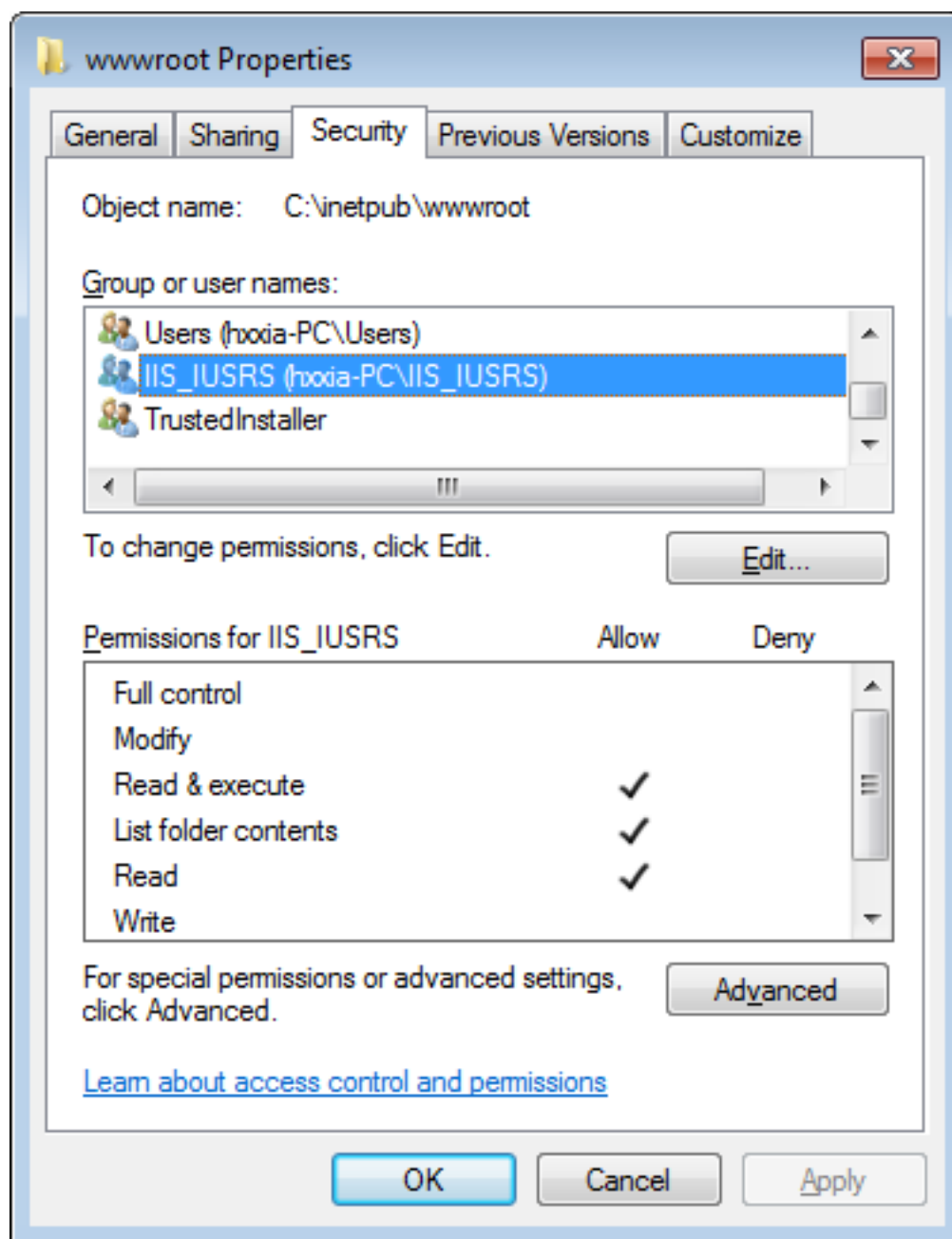
If IIS is not working, please re-install IIS or fix the IIS configuration by following the IIS help.

1.1.4 Task 1.4: Configure IIS

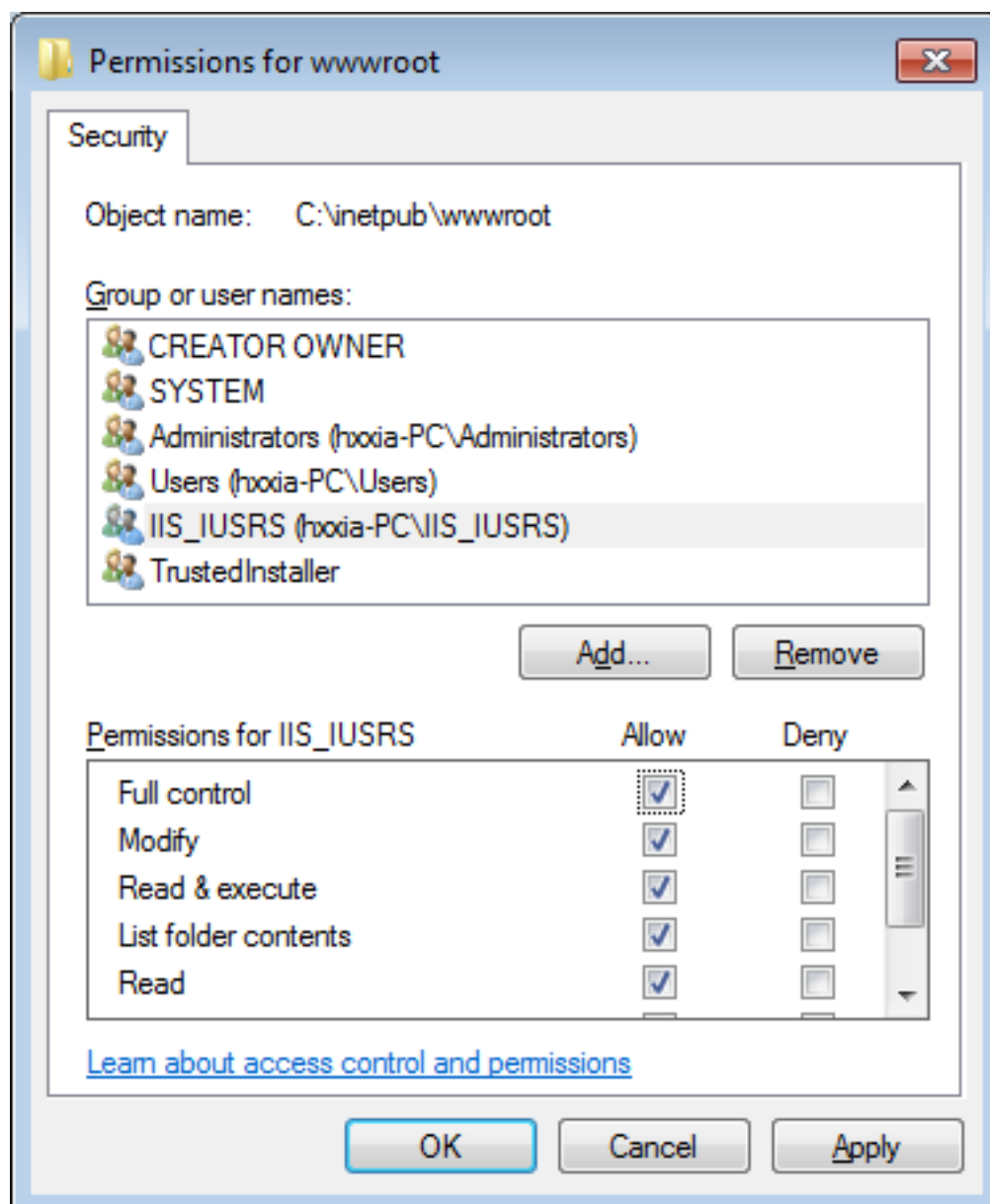
Follow steps below to grant **IIS_IUSRS** account with full controls to the IIS Web root folder:

Step 1: Right click `C:\Inetpub\wwwroot` and select **Properties** from the popup menu.

Step 2: On the **Security** tab, select **IIS_IUSRS** in the **Group or user names** list box, and then click the **Edit** button.

Figure 1.6: Select IIS_IUSRS

Step 3: Select **IIS_IUSRS** in the **Group or user names** list box, and then select the **Allow** check box for the **Full control**.

Figure 1.7: Select Full control for IIS_IUSRS

Step 4: Click **OK** to save the settings.

1.2 Task 2: Install Apeon Server and Apeon Developer

1.2.1 Task 2.1: Install Apeon Server and Apeon Developer

On the Windows PC, install Apeon Server and Apeon Developer by the following steps.

Step 1: Start IIS server: open IIS Manager, right click the **top** node (not the website node) in the treeview and select **Start** from the popup menu.

Step 2: Launch the Apeon product setup program by double-clicking **setup.exe**. Click **Next** until you reach the screen for selecting the product components. Make sure the checkboxes for **Apeon Server for .NET** and **Apeon Developer** are selected.

Step 3: Click **Next** until you reach the screen for specifying the IIS Web site where Appeon Server will be installed. Make sure **Select an existing Web Site** and **Default Web Site** are selected.

Step 4: Click **Next**. Choose whether to install the **Demo Applications**. If you have ASA/SQL Anywhere database server installed, select to install the demo; otherwise, do not install the demo since the demo requires ASA/SQL Anywhere database server to be previously installed.

Step 5: If you selected to install the **Demo Applications**, specify the path for the ASA/SQL Anywhere database server engine.

Step 6: Click **Next** until Setup begins copying files for the Appeon Server installation.

When Appeon Server installation is completed, Appeon Developer installation automatically starts.

Step 7: Click **Next** until Setup begins copying files for the Appeon Developer installation.

Step 8: When the installation is completed, select the checkbox for **Restart IIS Server** and **Register .NET Framework 4.0** and then click **Finish**.

You can also restart IIS by typing **iisreset** in the command prompt window.

1.2.2 Task 2.2: Verify the installation

On the Windows PC, run `http://IP_Address:80/AEM/`. If AEM is launched successfully, then Appeon Server is installed successfully.